

The Escalator

Almeida



Rid-ing up the es - ca - la - tor to the top, Rid-ing down the es - ca - la - tor, then we stop!

© 2003 WARNER BROS. PUBLICATIONS U.S. INC. All Rights Reserved

Jelly in the Bowl

Almeida



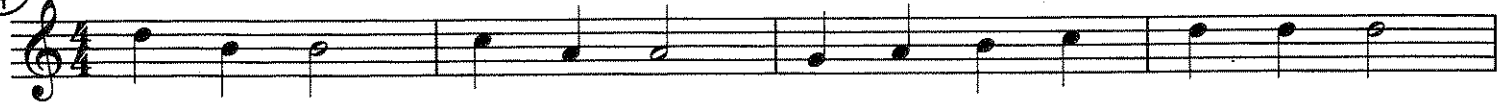
Jel - ly in the bowl, jel - ly in the bowl. Wib - ble, wob - ble, wib - ble, wob - ble, jel - ly in the bowl.

© 2003 WARNER BROS. PUBLICATIONS U.S. INC. All Rights Reserved

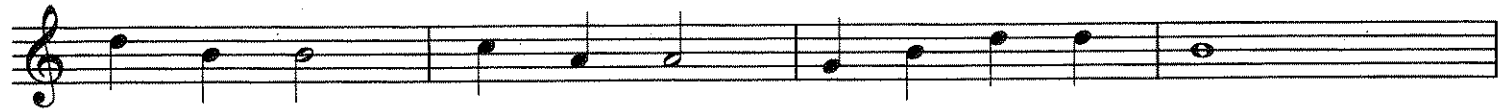


Lightly Row

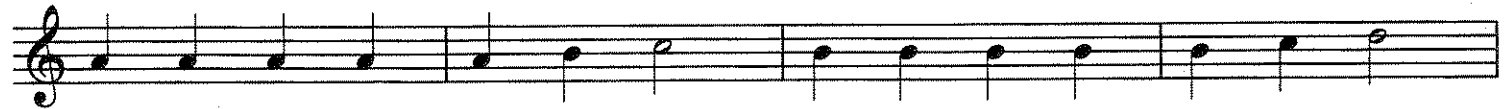
German



Light - ly row! Light - ly row! O'er the glass - y waves we go.



Smooth - ly glide! Smooth - ly glide! On the si - lent tide.



Let the winds and wa - ters be min - gled with our mel - o - dy.



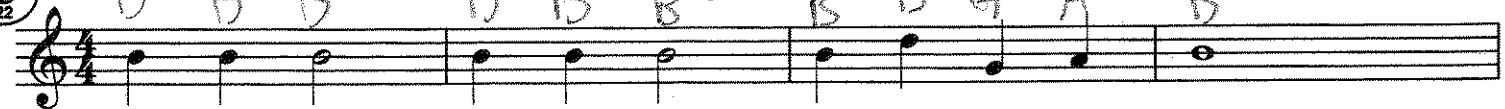
Sing and float! Sing and float! In our lit - tle boat.

Can you find a two-measure pattern that occurs three times in this piece?



Jingle Bells

James Pierpont



Jin - gle bells! Jin - gle bells! Jin - gle all the way!



Oh, what fun it is to ride in a one - horse o - pen sleigh.



Jin - gle bells! Jin - gle bells! Jin - gle all the way!



Oh, what fun it is to ride in a one - horse o - pen sleigh.